



WHY US?

Our highly experienced practitioners have been providing high-quality lining materials and services for more than 20 years

WE HAVE EVERYTHING YOU NEED

- **Equipment:** Thunder guns, steam units, calibration rollers, fully equipped vans with all you need to lining restoration services.
- **Quality control:** parameters checked twice a year by an independent laboratory institute.

LINING GROUP AMERICA



Thunder gun



LINING GROUP AMERICA

Bodus, is based in Switzerland and has the core competence mainly in the field of sewer rehabilitation and in the rehabilitation of house connection pipes with bodus' own Metroliner System® (DIBt approval number Z-42.3-53).



SERVICES & PRODUCTS



01. SPECIALIZED LINING PRODUCTS

Cured-In-Place Pipe (CIPP) lining is a trenchless pipe rehabilitation technique used to repair existing pipelines without the need for extensive excavation. It is commonly employed for rehabilitating sewer and stormwater pipes.

EXPOXY RESIN

- No shrinking
- Styrene-free
- Hypoallergenic
- Excellent adhesion in wet substrates and bonding into the hosting pipe
- Processing times depends on the application conditions, optional hardener pot life

LINER

- 90° elbows
- Diameters transitions
- Curing method with any preferred process
- Excellent E-modul values (laboratory test resistance)
- Customized fabrications for special projects, e.g. liner end cap.
- Customized nominal diameter changes (cone)

02. PETROLINER

We develop custom coating solutions for specific conditions.



Tank lamination

Optimized a long-lasting corrosion protecting when the time factor is crucial.



Lamination floating tanks

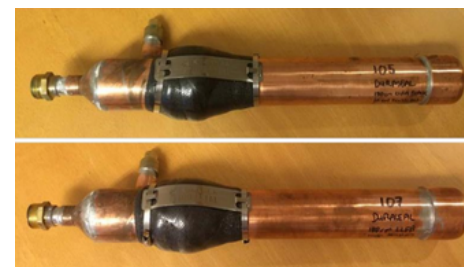


Wrapping

Restoring the strenght of corroded, weakened and holed pipe.



8" Open Drain Wrapping Offshore



DNV GL approved wrapping solution per ISO 6182-1



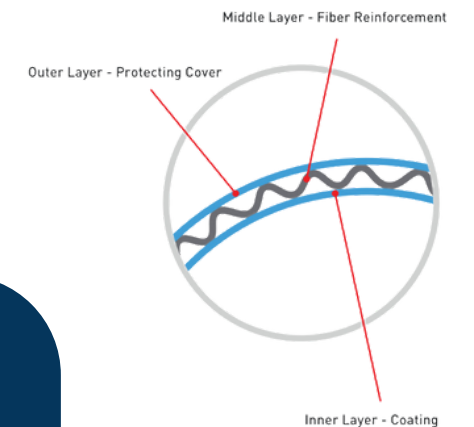
03. NORDITUBE

NO RESIN, NO IMPREGNATION, NO CURING

The IH LINER is a Pull-In-Place-Pipe (PIPP) and is designed for diameters from DN 50 up to 1200 mm. The system is approved for potable water, gas, oil and heat pipes as well as industrial applications.

The IH LINER is structurally self-supporting and therefore independent from the host pipe. The liner will remain completely stand-alone.

Diameter	50-1200 mm
Coating	PE, TPU or other elastomers
Seamless Woven Reinforcement	Polyester and/or Kevlar
Pressure Rate	Water: PN4-PN16, Heat: PN16, Gas: PN40
Classification	Independent system bearing inner pressure



APPLICATION AREAS:

- Potable Water
- Industrial Water
- Gas
- Oil
- Heat pipes

The IH LINER has a three-layered structure design

NSF/ANSI 61 approved